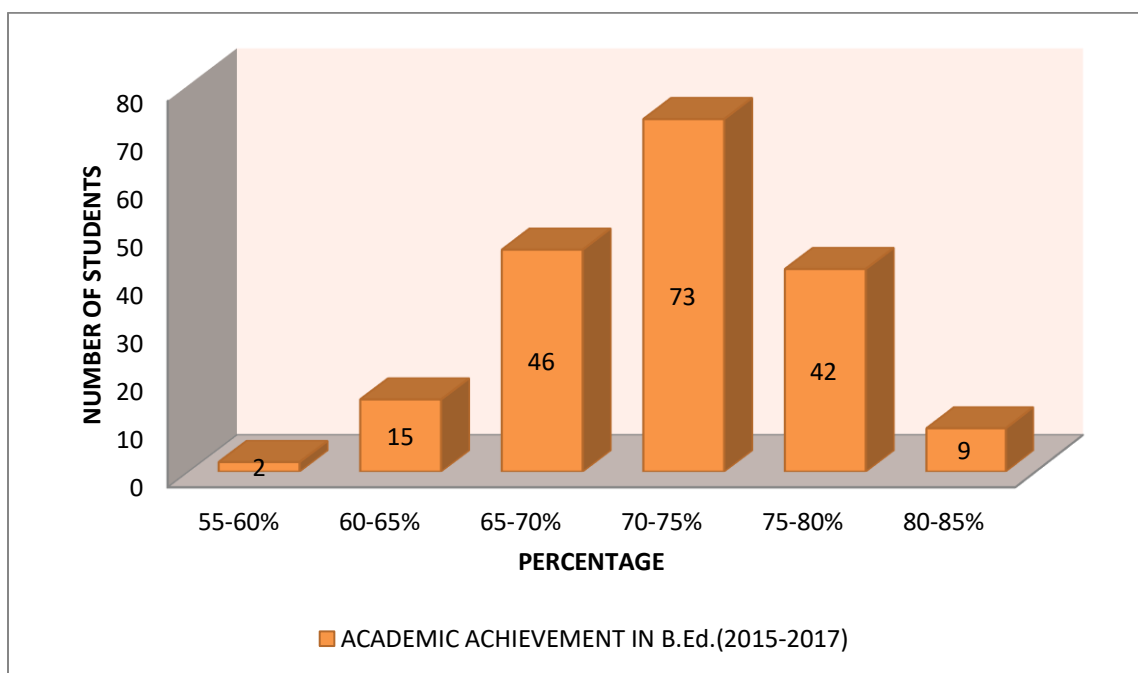
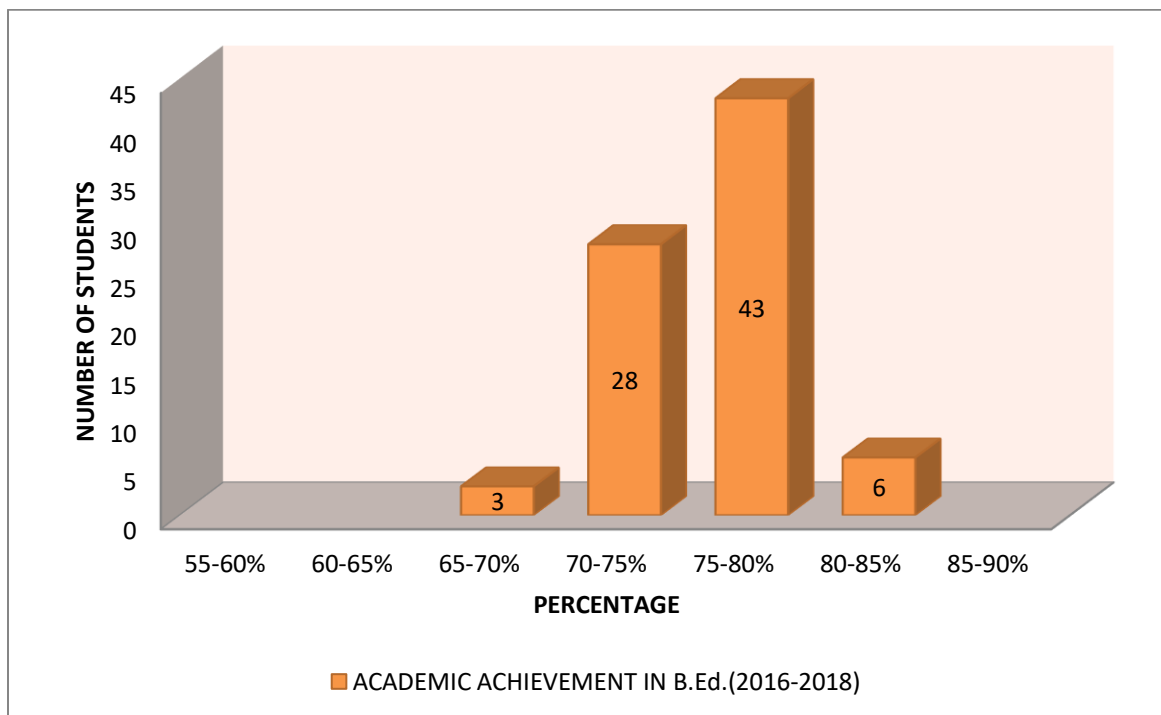


**S. S. JAIN SUBODH MAHILA SHIKSHAK PRASHIKSHAN  
MAHAVIDHYALAYA, AIRPORT ROAD, SANGANER, JAIPUR**



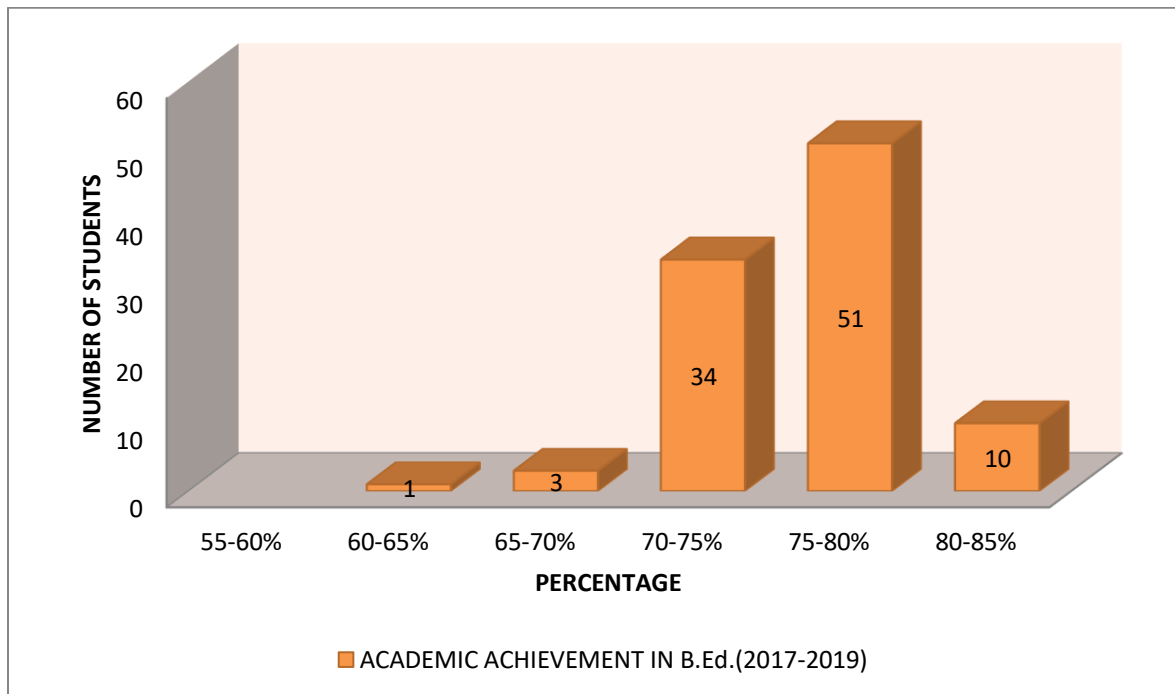
SESSION	55-60%	60-65%	65-70%	70-75%	75-80%	80-85%
2015-2017	2	15	46	73	42	9

**S. S. JAIN SUBODH MAHILA SHIKSHAK PRASHIKSHAN  
MAHAVIDHYALAYA, AIRPORT ROAD, SANGANER, JAIPUR**



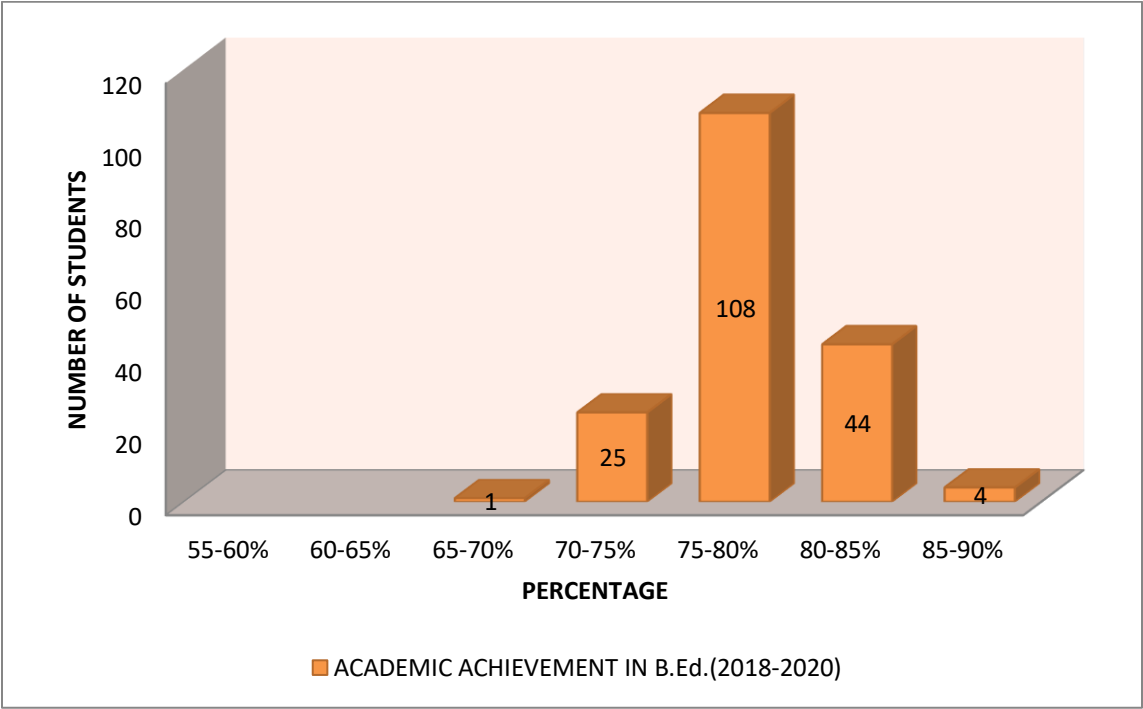
SESSION	55-60%	60-65%	65-70%	70-75%	75-80%	80-85%
2016-2018	-	-	3	28	43	6

**S. S. JAIN SUBODH MAHILA SHIKSHAK PRASHIKSHAN  
MAHAVIDHYALAYA, AIRPORT ROAD, SANGANER, JAIPUR**



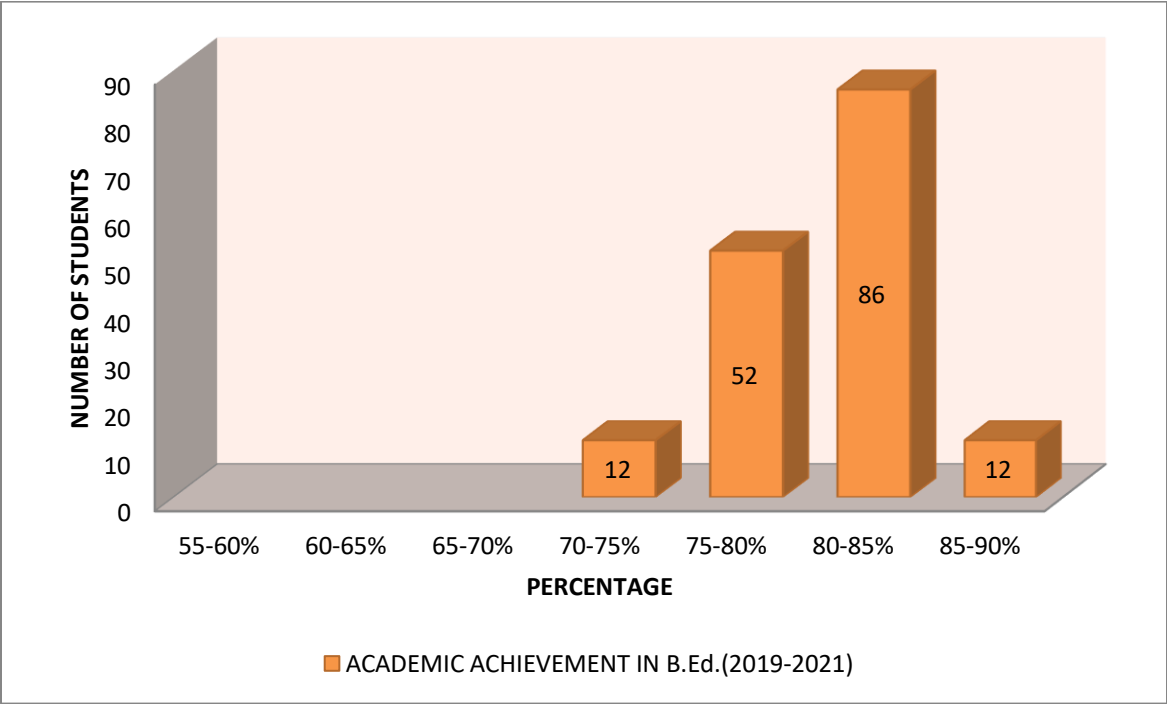
SESSION	55-60%	60-65%	65-70%	70-75%	75-80%	80-85%
2017-2019	-	1	3	34	51	10

**S. S. JAIN SUBODH MAHILA SHIKSHAK PRASHIKSHAN  
MAHAVIDHYALAYA, AIRPORT ROAD, SANGANER, JAIPUR**



SESSION	55-60%	60-65%	65-70%	70-75%	75-80%	80-85%	85-90%
2018-2020	-	-	1	25	108	44	4

**S. S. JAIN SUBODH MAHILA SHIKSHAK PRASHIKSHAN  
MAHAVIDHYALAYA, AIRPORT ROAD, SANGANER, JAIPUR**



SESSION	55-60%	60-65%	65-70%	70-75%	75-80%	80-85%	85-90%
2019-2021	-	-	-	12	52	86	12